

STEM, Healthcare Associate Degrees Can Be Ticket Out of Poverty, But Study Finds Vast Disparities in Success

By Adam Smith

While Massachusetts is home to the world's most elite universities such as Harvard and the Massachusetts Institute of Technology, it's often community colleges that provide a lifeline to many of the state's least well-off students. That's thanks largely to programs that offer associate degrees in healthcare

specialties and "STEM" – science, technology, engineering, and mathematics – fields. These often two-year degree and certificate programs can help students land high paying jobs in nursing, medical imaging and dental hygienics as well as in engineering, cybersecurity and electronics.

But despite state efforts to level the playing field for these strugg-

ling students – such as by offering paths to free community college education – many students are unable to complete associate degrees that could help them earn solid paychecks. And major disparities exist in who obtains both STEM and healthcare associate degrees in Massachusetts within 6 years of starting the programs. Those were two major takeaways from a new

report out by a team of Harvard and Brown university researchers.

The report found that male students were more likely to succeed in STEM programs than female students were in general; that women were more likely to complete healthcare degrees than men; that enrollment and success rates

Continues on Page 4

Capturing the Moment

Boston Chinese Photography Association Helps People See Life Through an Artistic Lens

By Yuchen Hong

The Boston Chinese Photography Association is not just about helping people take better pictures, according to its leaders. The group is also about helping turn hobbies into lifelong forms of artistic expression.

"Some people are very interested but don't know how to shoot," April Chai, the chair of BCPA, told the Sampan, in a recent interview. "Sometimes we start from helping them choose a camera, guiding them step by step. Many new members quickly win awards, which is deeply gratifying for veteran members."

Operated by volunteers who manage the group when they're not doing their day jobs, the photography group has over the past decade fostered the art of taking pictures among amateurs and hobbyists alike. It recently was awarded a small grant from the Asian Community Fund to help it further grow and serve its membership.

And many of its members, like Chai, are pursuing photography as a hobby outside their careers – and have found it as a way to give back to their communities. Chai, for example, is a medical doctor by profession, but a photographer of nature and wildlife by passion. She first connected with Boston pho-

Continues on Page 3

BCPA Photographer
MAY 2021

透过不同的视角
看别样的世界

柴锋
BCPA董事会成员
多伦多国际摄影节优秀奖摄影师

**摄手
风采**

BCPA

Opinion/Politics

Editorial: A Shameful Year of Silencing Dissent and Speech

It was just some years ago, when in the last Trump administration, we saw demonstrations for Black Lives Matter take over the streets to rightfully call out relentless injustices, the Women's March crowd into D.C. and demonstrations in support of science march through hundreds of U.S. cities. But, now, as we say goodbye to 2024, and begin a new year and a new presidential administration, we should not forget the lonely and persistent voices that led the movement of compassion and empathy throughout the year. These mostly – but not all – young people spoke out against the U.S.-backed mass killings, destruction and starvation in Gaza.

We should also remember how throughout 2024 these voices had largely been smothered. Reputations had been smeared. The truth had been perverted. Those in high places of power, even in the most "liberal" cities

like Boston, looked down and called the people demanding an end to the violence as radicals, anti-Semites, and terror supporters. Protesters lost their jobs, were defamed and arrested.

They took the risk, however, because they had seen too much: Photos and videos of bombed out hospitals, of starving and freezing babies, of children without legs and arms, of dead mothers and fathers, of people burnt alive, and of murdered journalists. They felt a moral – a human – obligation to speak out.

But the "adults" in the room decided any dissent was too much dissent. Words were twisted so that slogans in solidarity with the struggle of Palestinians were called anti-Semitic. This was the year when criticisms of Israel's bombardment were called hateful and hurtful. Peaceful protesters were handcuffed, zip-tied and smashed against the pavement. They were

arrested. Colleges and universities – places where freedom of thought was supposed to be promoted – turned into silencing machines. Campus police and university administrators here and all over the nation showed they had no spine and no idea of what it means to support free speech rights.

Now, as we start the new year and will see new threats to speech, don't let these voices of dissent go unheard. Don't forget that you might one day be the victim of an injustice and those you care about might be as well. And when you pick up a sign to rally around your cause – whether it be for immigrant rights, equality for gays and lesbians and transgender people, or justice for people displaced by luxury development projects – you may now find your words and your dissent policed, twisted and silenced. You may face arrest if you step out of an arbitrary line. And it will be too late to speak out.

How Robert F. Kennedy Jr.'s Nomination Reflects Nation's Public Health Skepticism

By Jeff Millman

Two decades ago, a president's choices for leaders of public health agencies like the Food and Drug Administration would not likely have generated much controversy. But in the years after the Covid-19 pandemic that spurred lasting skepticism from some segments of the American public, that is no longer the case. Especially for president-elect Donald Trump. Over the past month Trump has made nominations for the FDA, Centers for Disease Control and Prevention, National Institutes of Health, and the Office of the Surgeon General, and several of his picks have gotten intense scrutiny and a generated good deal of concern.

Among Trump's most controversial nominations were presidential candidate dropout Robert F. Kennedy Jr. for the Department of Health and Human Services and celebrity doctor Mehmet Oz for the Centers for Medicare and Medicaid. He has also chosen Jay Bhattacharya, a medical doctor and well-known critic of the Biden administration's pandemic response, to head up the NIH. These nominations, and the results of the

election more generally, are believed by some observers to represent a cultural shift in the United States. The desire for a technocracy in which like-minded experts produce "scientific" policies appears over, as voters move rightward both socially and politically.

With the selection of RFK Jr. to lead the Department of Health and Human Services, Trump completes his attack on the establishment and scientific expertise. His other nominations, while unconventional, are at least within the range of comprehension. Some are actual medical doctors and scientists. Even Dr. Oz has health credentials (he is a former surgeon and professor emeritus of cardiothoracic surgery at Columbia). Kennedy, on the other hand, is an environmental lawyer who is perhaps most well-known for his opposition to vaccines over the past two decades. He ran for president on a third-party ticket against Trump and Harris before endorsing Trump in August, despite previously stating that he would never endorse Trump and that Trump was a "terrible human being" and a "sociopath." These old comments have yet to come back to haunt him,

as Trump promptly offered him a role in his administration. The secretary of health and human services is an important cabinet position, with the responsibility to advise the president on all health matters and oversee multiple government health organizations such as the FDA and the CDC.

This is not the first time RFK Jr. has been considered for such a political post. Though he has aligned himself with Republicans and is now being constantly criticized by the left, Kennedy was a staunch Democratic activist for many years and was considered by the Obama administration for the role of EPA Administrator. In a now-forgotten irony he was taken out of consideration because the Obama administration feared that he was too left-wing and would not garner Republican support. Since 2007, Kennedy has also chaired Children's Health Defense, a nonprofit activist organization that promotes an anti-vaccine agenda. He has become one of the most well-known "anti-vaxxers" in the United States, helping to popularize formerly fringe views not only about vaccines but also about water fluoridation and the supposed dangers of wireless tech-

SAMPAN
 A Publication of the AACA
 www.sampan.org
 87 TYLER STREET
 BOSTON, MA 02111
 TEL: (617) 426-9492 x 206
 FAX: (617) 482-2316
 ads@sampan.org
 editor@sampan.org

Chinese Editor
 Ben Lee

English Editor
 Adam Smith
 asmith@sampan.org

Editorial Committee
 Christopher John Stephens
 Ed Crotty
 Clare Sheridan

Correspondents
 Yuchen Hong
 Jeff Millman
 Kristen Si
 Christopher John Stephens

Translators
 Bear Daddy

Advertising & Production
 Ben Lee (Chinese section layout, design), Adam Smith (layout and design), Ben Lee, Kery Forges (ads)

SAMPAN is New England's only biweekly bilingual English-Chinese newspaper. Sampan fosters cultural understanding and celebrates global diversity. Founded in 1972, Sampan is published by the Asian American Civic Association. Sampan is distributed free in Chinatown and the Greater Boston area. All donations to the publication are tax deductible. Subscription: \$65/year (1st class mail). The reproduction, in whole or in part, of any information contained herein and prior is forbidden without the express written permission of the publisher.

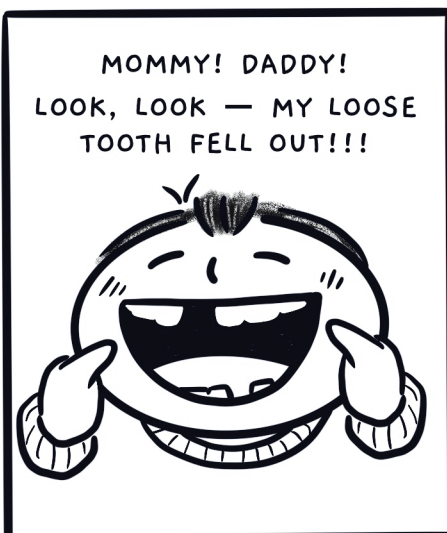
nology. Poised to head the Department of Health and Human Services, Kennedy may have the opportunity to realize some of his beliefs through policy.

Among Kennedy's plans are to pause the NIH's drug development and infectious disease research and "shift its focus to chronic disease," slash entire departments of the FDA, and promote research into the relationship between some vaccines and autism. Kennedy's nomination requires confirmation by the Senate, so there is the possibility that he fails to accede to the post. Even though Republicans have a majority in the Senate, it is not clear they will give Trump carte blanche. And even if Kennedy is confirmed, it will be

Continues on Page 11

EMPTY BAMBOO GIRL 竹升女

by Lillian Lee





Boston Chinese Photography Assoc. Offers Education, Sense of Community

Continued from Page 1

tographers through an online forum.

“I’ve been involved for ten years since then,” she told Sampan.

BCPA’s traditional activities include outdoor events, art lectures, and photography courses taught by members.

“Most of our activities are in Boston, as everyone has jobs, so we use weekends, but we organize one or two out-of-state trips annually,” Chai explained.

Their lenses have captured the maples of New Hampshire, the migration of snow geese in Maryland, and the bloom of cherry blossoms in Washington D.C. For the past few years, they’ve been publishing a quarterly photography magazine, encouraging members to document their life experiences.

The organization aims to support every member, especially newcomers, she said, no matter their skill level. In fact, BCPA welcomes anyone interested in photography, maintaining a bilingual community that embraces photo enthusiasts from diverse cultural backgrounds.

Beyond community building, BCPA has contributed to the Boston Chinese community, as well, the group says. The BCPA provides free photography services to local non-profit organizations, including annual Asian American festivals and city

hall celebrations.

“We also help the elderly, collaborating with nursing homes to take photographs. Sometimes people don’t have a good photo to display when they pass away, and we understand and help them,” Chai said.

The Asian Community Fund’s grant has been vital for BCPA’s sustainability and expansion. “The grant allows us to extend our reach, bring communities together, and celebrate our cultural heritage,” said Liz Fang, the organization’s public relations representative.

Their documentary film “Forever Foremost” captured the 20-year journey of a local dance troupe, illustrating the artistic pursuits and cultural heritage of the Chinese community.

“We were completely amateur filmmakers, but we believed in the significance of this story,” Chai said.

“Driven by pure passion, we overcame tremendous challenges — from staging complex outdoor scenes like snow scapes and rainy sequences to coordinating our volunteer team’s schedules.”



The film’s Best Short Film Award at the 2nd International Chinese Original IP Film Festival validated their collective efforts and storytelling commitment, she said.

BCPA has been exploring new

mediums to engage photography enthusiasts, too. This year, the group launched a YouTube talk show.

“We did an episode called ‘Photographers’ Heartbeat Moments,’ inviting photographers to discuss scenarios that make their hearts race while taking photographs,” Chai said.

“BCPA has been somewhat life-changing for me,” Chai reflected. The association’s activities have provided her with an anchor outside work, helping her make friends and grow personally. “To this day, I’m always very eager to participate in the association’s activities.”

The organization has also reached out to other communities, joining the Professional Photographers of America (PPA) network and interacting with local photography associations in Boston. “People might not fully understand Chinese communities,” said

Chai. “They might see us as hard-working professionals. But we also have many hobbies and interests, and we are just as vibrant.”

Study Finds Vast Disparities in Who Obtains STEM and Healthcare Associate Degrees in Massachusetts Schools

Continued From Page 1
 varied among racial groups; and that obtaining strong math skills in high school was critical for determining who could break into the fields. The report also gave a window into the increasing number of students from extremely low-income families entering community colleges, which often have vastly fewer resources than their wealthy four-year college counterparts.

Indeed, one of the most striking trends over the period – 2005 to 2016 – in which the report’s researchers reviewed tens of thousands of students was the hike in enrollment of poorer students to community colleges. Study after study has already shown that the least well-off are the most likely to face obstacles in higher education of all types.

“Massachusetts community colleges, increasingly, are serving students from low-income families, and that means they face an increasingly difficult challenge, because those students find it more difficult to pay for a college, and they also come often with not having strong elementary and secondary educations. So consequently they have lots of skills they need to build,” Richard Murnane, an economist at the Harvard Graduate School of Education and the main author of the report, told the Sampan.

In 2005, around 21% of students entering the community college programs came from low-income families, as defined by those eligible for reduced-price school lunches, found Murnane’s team, and by 2016, the number shot up to 48%.

The trend is important, said Murnane, for two big reasons. One is the stress it puts on the schools and two it means more and more students need help to climb up academic and economic ladders.

Community colleges increasingly need to support “young people who have challenges in their math skills and who, in many cases, face very complex personal lives. All of them are working. Many of them have family,” Murnane said. “As one community college dean said, a great many students are one crisis

away from dropping all their courses. And a common crisis is that you lose a babysitter and you’ve got very young kids, or your car breaks down and you don’t have the money to fix it – you can’t get the class. So those are the challenges that a great many community college students face. That is not the case – anywhere near that extent – for young people going to four-year colleges.”

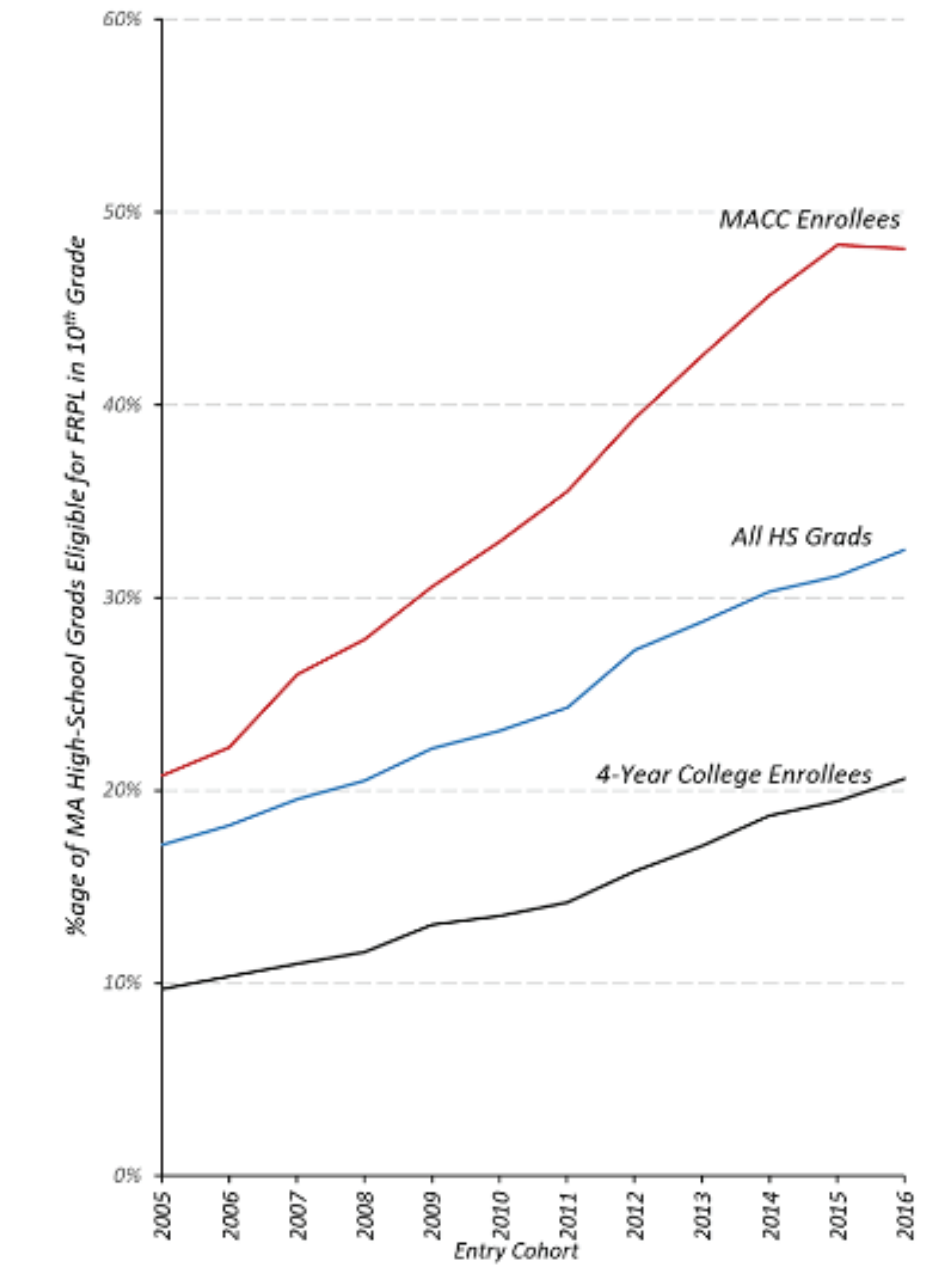
This is critical, because an earlier study has already shown that earning associate degrees in STEM and especially healthcare fields can have big pay offs for students who can’t get into four-year colleges. An associate degree or certificate in healthcare, STEM, and trade-related occupations, in fact, won the highest payoffs, found the 2021 study “Pathways to Economic Mobility,” led by Alicia Sasser Modestino of Northeastern University. Healthcare proved the most lucrative, found Modestino, “providing the highest annual earnings boost — of \$10,000 to \$15,000 per year” when compared to people with no degree or certificate outside of high school.

“(Modestino) asked, ‘Among people who get associate degrees, what’s the economic payoff?’ And the answer was, it was really quite good in the two fields, but not so much in other fields,” said Murnane, noting his work was a followup to Modestino’s study.

Murnane’s team specifically wanted to see if community college students were choosing these high-paying fields of study – and what disparities existed. Among the other findings of the report were:

Racial disparities were pronounced between whites and Asians and Blacks and Hispanics. “White, and especially Asian, students in every entry cohort had higher probabilities of (associate degree) attainment in both healthcare and STEM programs than did their Hispanic and Black peers,” according to the report.

The reason for this, said Murnane, is likely mainly because of Black and Hispanic students are more likely to come from lower-income families



All charts are from the report, “Are Community-College Students Increasingly Choosing High-Paying Fields of Study? Evidence from Massachusetts.”

and less likely to have attended high school in communities with strong school systems, whereas the case was most likely the opposite for the white and Asian students.

“It just kind of reinforces some of these other demographic observations,” he said.

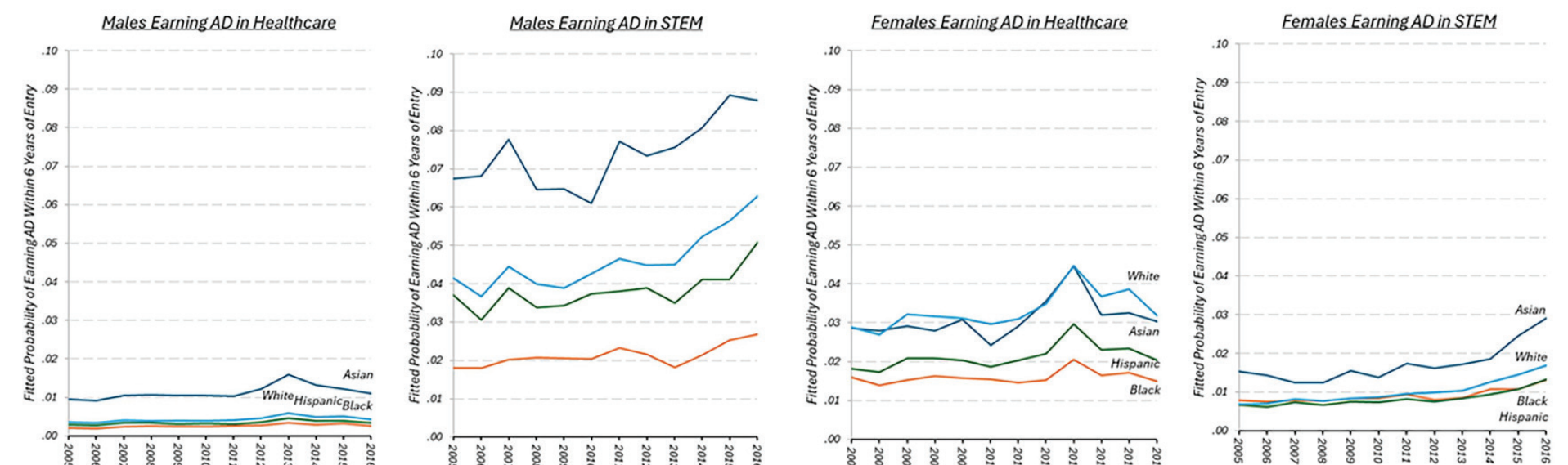
Sex disparities were pronounced. “Our analyses revealed several patterns. First, male students had a much higher probability of earning an associate degree in a STEM program within six years of their entry into a

MACC than did females. Second, female students had a much higher six-year probability of earning an (associate degree in a healthcare program than did males,” found the report.

Healthcare-related associate degrees came with several challenges.

“You can’t start out in a nursing program or in a medical imaging program, you have to first take prerequisites and then pass a national exam, and that takes a minimum of one year,” said Murnane. “And for

Continues on Page 10





LEADING THE WAY: Asian Fund Director Danielle Kim

Asian Community Fund Aims to Bridge Gaps for Region's AAPI Communities

By Yuchen Hong

When the Asian Community Fund (ACF) launched in 2020, it set out with a clear mission: to unify and empower the Asian American Pacific Islander community across Massachusetts.

Founded during a period of heightened anti-Asian racism and in response to research showing less than 1% of philanthropic giving reaches Asian communities, ACF has become a vital resource for increasing visibility and support for local Asian communities.

"We've been so invisible to date," says Executive Director Danielle Kim, highlighting how the AAPI community often exists in isolated pockets in the United States, despite being a global majority.

Over the past few years, the organization has distributed over \$1 million to 86 community organizations, according to the group, which is part of the non-profit Boston Foundation. Each spring, ACF opens

a grant application cycle, last year receiving 105 applications. With 37 community volunteers reviewing submissions, the organization had funded 52 projects totaling \$450,000 that year.

The group sprouted from the Boston Foundation. Founded in 1915, the Boston Foundation is one of the largest community foundations in the nation with around \$1.9 billion in total assets. It partners with roughly a 1,000 charitable funds to help various community initiatives including early childhood health and education programs, job-skills training programs and other projects.

The Asian Community Fund, however, says its approach goes beyond traditional grant-making. ACF has created statewide networks that connect Asian American-led nonprofits, breaking down barriers between different ethnic groups and geographies. Through innovative initiatives like the Asian Business

Continues on Page 10

B.U. Doctor: Clinical Trials for Cancer Are Increasingly Less Diverse

By Kristen Si

Thousands of clinical trials are run in cancer research every year to test new treatments and gather data about their effectiveness. But these studies can lack a diversity of participants, new research has indicated.

For example, Dr. Heather Ann Edwards, an associate professor of otolaryngology-head & neck surgery at the Boston University Chobanian & Avedisian School of Medicine, found in a new study that over time, diversity in head and neck cancer clinical trials has decreased. This is bad news, because several studies have shown that survival rates for cancer are significantly lower for patients of color when compared with white patients. One potentially influencing factor may be a lack of research focused on these populations and how these patients respond to new treatments.

Sampan interviewed Dr. Edwards about her research, its implications, and ways that researchers at Boston Medical Center, where Dr. Edwards serves as director of the head and neck surgery program, have worked to improve gaps in equity in cancer research.

Sampan: Could you describe the research that you have done on the lack of diversity in cancer clinical trials and some of the results you have found?

Edwards: We have known that diversity in clinical trials in oncology has been a problem for a long time. This is a problem because we develop new treatments and new drugs in clinical trials. If the patients that enroll in clinical trials are different than the patients that we actually use those treatments on later, then we are giving patients treatments that were not shown to be effective in patients like them... There have been a lot of efforts at the level of the National Institutes of Health and the Food and Drug Administration to try to make clinical trials more accessible to diverse populations. What we wanted to look at was if these initiatives had been successful over time. We decided to look at all the clinical trials listed on clinicaltrials.gov, which is a large national repos-

itory... We wanted to see if clinical trials were becoming more diverse or more representative over time. Going into the study, my hypothesis was that we would see improvement, but that it would not have reached equity. We were surprised that we found that, at least in the head and neck oncology space, clinical trials are becoming less diverse over time.

Sampan: I think that my interpretation was that awareness of the lack of diversity in research studies would increase over time, and yet you found the opposite has been happening in the enrollment of these studies. Do you have any potential hypotheses as to why there might be an increase in the lack of diversity over time?

Edwards: Yeah, I think that's a great point. I do think, as you said, awareness is increasing... So why is it still getting worse, even though there's more awareness of it? Our study did not address the why, but I do, just as someone who has an interest or expertise in this space, I do have some hypotheses. I think one of the reasons is that clinical trials are actually getting more and more expensive to perform over time with increased regulatory requirements and the increased cost of treatments like immunotherapy drugs... The groups that pay for clinical trials are often predisposed to do them in centers that have an established track record in being effective at running clinical trials. Therefore, they tend to center their trials at these big established cancer centers as opposed to doing them in smaller communities which may have more diverse patient populations.

Secondly, I think that within the world of clinical trial research, we have historically considered the markers of success as the number of patients you accrue and how quickly you accrue them... Diversity is not something that is considered as a marker of success... I think that as long as people are not putting money behind it, people may be talking about it, without actually having financial incentives to activate initiatives to improve it.

Continues on Page 10

Book Review

Kiyoko Murata's 'A Woman of Pleasure' Finds Agency in an Untenable Situation

By Christopher John Stephens

There's a reason why some stories should not be told by people outside their world. In the case of Arthur Golden's 1997 novel "Memoirs of a Geisha," adapted into a hit 2005 eponymously titled film, the Orientalism whitewashing was in full flower. Golden's novel, set in the late 1920's, roughly 25 years later than the events of Kiyoko Murata's "A Woman of Pleasure," told basically the same story. A daughter is sold into prostitution to cover her family's debts. Both novels take pains in describing the minutiae of the women's lives, the ranking of courtesans, and the naming systems of brothels.

The place where Golden diverges from an ethical telling of a sad story based on true elements story comes by his misrepresentation of a geisha's life and occupation. Geisha's roles were more elevated, more in keeping with that of a performance artist rather than sex worker, and primary source documentation tells us that the lives of geisha and courtesans rarely mixed. Golden's story and the subsequent film adaptation left the heroine adrift and alone in circumstances outside of her control. Life and fate happened around the geisha, leaving free agency and autonomy mere unattainable dreams. Golden whitewashed and mansplained his tragic heroine. He famously divulged the identity of the former geisha he used as a source. In his efforts to produce a commodity as marketable as "M Butterfly" or "Flower Drum Song," he added nothing progressive or advanced to the narratives about this time or portrayals in general of Asian women in the first half of the 20th century.

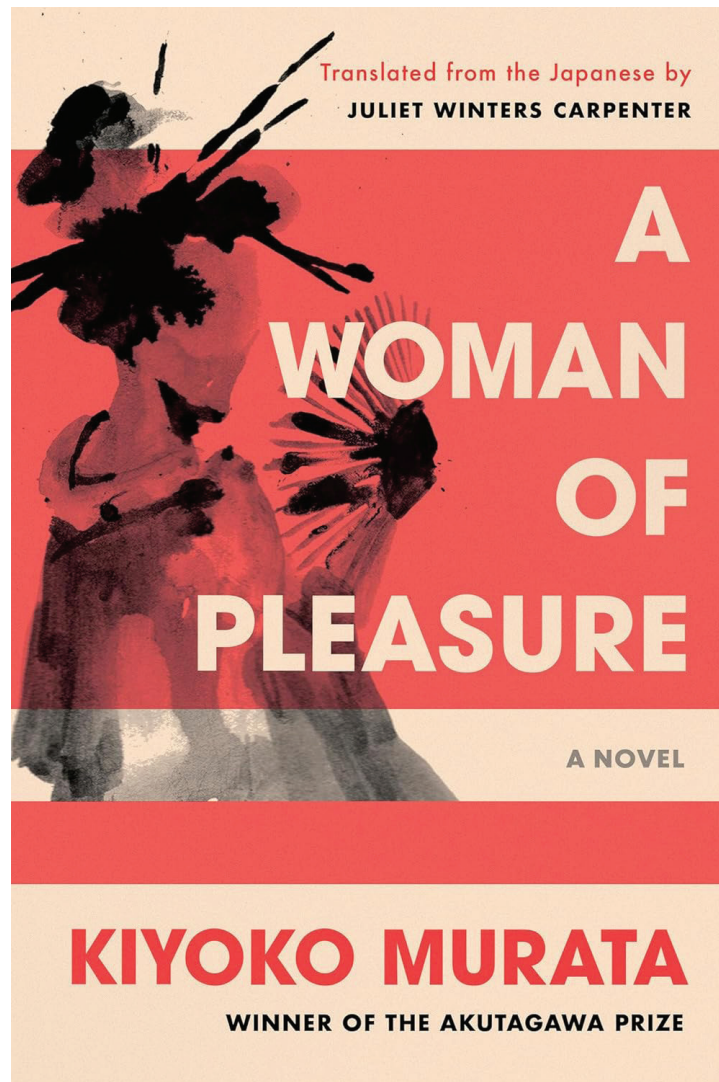
Kiyoko Murata's "A Woman of Pleasure," first published in Japan in 2013 and available in English through a thrillingly fresh 2024 English translation by Juliet Winters Carpenter, is equal parts brutally graphic in its portrayal of women as commodities and at times almost joyous in the energy and independence of its fifteen year old heroine Aoi Ichi. In the brief time frame of the novel, 1903-1904, Ichi never lets go of the perseverance grown from life on her rocky volcanic island home. It was "the sort of place where stumbling upon a folkloric demon would come as no surprise." The women of her family and home were strong, resilient swimmers who made their livings through catching fish and shellfish. When Ichi is sold to an exclusive brothel as a way to pay off her family's debt, the die is cast. In no uncertain terms, especially through the first few pages, the reader understands that these women are now chattel to be managed and moved at will:

"The girls weren't put to work right

away. They were like vegetables fresh from the field, still muddy: before they could be served, they needed to have the dirt shaken off, have unsightly leaves removed, and be washed clean."

If this gives the sense that Ichi's new home, a brothel named Shinonome, was a finishing school, that's indicative of the brilliant balancing act Murata manages here. Ichi is irascible, rebellious, a typical teenager of any era or culture. She will not go down without a fight. This is ostensibly her story to be told, but two other narratives are prominently featured. Shinonome, the brothel's top courtesan and its namesake, makes it her mission to cultivate a respectable prostitute from this primitive island girl. Testuko, Ichi's teacher, makes it her point to foster reading, composition, and calligraphy skills into her students so that they may more effectively communicate with their clients. This literacy skill also allows women to read their own promissory notes to keep track of their financial debts to the brothel. The women are also taught Japanese flower arrangement and Tetsuko believes had they not taken such classes and become prostitutes, these uncivilized girls "would have gone their whole lives not knowing how to write, never straining to find words to express the beauty of flowers."

It's this duplicity of tone and plot that can sometimes be jarring. The reader knows on every page what's happening to these women, how they're being treated, how their debt will never fully be erased. At the same time, there's a sense of reform happening beneath the surface. As their lives become more untenable and gloomy, their solidarity becomes stronger. They protect each other, wash each other's backs, and they learn that an employee strike such as ones they had heard about in distant shipyards was a viable solution to their problems. The Prostitute Liberation Law of 1872 had proposed reform and free agency, but it wasn't happening. As a result, at the novel's climax we read of the Shinonome strike, inspired by a strike at a nearby Nagasaki shipyard, in which working conditions and equity rose to the surface. Readers might find the positive post-brothel living potential unrealistic, but the strength in numbers is stirring at this point in the narrative. These women had done what they were trained to do, had endured humiliation



and degradation at the hands of their male clients, and the chance of better lives was palpable.

The strengths of "A Woman of Pleasure" rest in the fact that Murata seems less concerned with prurient interests and scatological descriptions than she is in developing a treatise of feminism. Tetsuko, the brothel teacher and default dispenser of all knowledge, espouses the ideas of Fukuzawa Yukichi, whose assertions that girls should also be allowed to study physics and other hard sciences prove refreshing. Reading deeper, she learns Yukichi believes only a woman of "refinement" deserves to be called "a proper lady." He dismisses brothel employees as "refined" ladies "because they are not human to begin with."

"A Woman of Pleasure" is a novel of discussions, considerations, and dialogues. When one of Shinonome's higher class courtesans becomes pregnant, a considerable amount of time is spent wondering whether the state of pregnancy itself is always a defeat. After all, it's the ultimate nine month commitment of conceiving of and growing to a completion another human being inside your body. The other question, about the level of dignity in married women as opposed to prostitutes, is also given ample consideration. Shinonome, the courtesan from whom all hard fought knowledge is dispensed, is very clear to Ichi about the differences:

"...A prostitute entertains a client only for an agreed upon time...When

that time is up, the client leaves...The rest of her time belongs to her and so does her body...there's nobody in the world as free as a prostitute."

As for wives, Shinonome is equally clear:

"[They] have to wait on their husbands constantly. The husband pushes his wife down whenever he feels like it and doesn't pay her a penny. She's forced to bear children and works like a pack animal. Pack animals get no pay...How is your mother at home any different from a horse or a cow?"

Ichi's periodic journal entries are a mixture of innocence and tragedy, presented like poetry with the poor grammar of an uneducated teenager. Learning her father is coming to visit, Ichi reflects:

"When he sees me what face will he make?"

Its all I think about.

I won't be able to sleep tonight.

There are lots of men

But only one I love-

My one and only pa."

Later, knowing she will leave the brothel and join the others in a strike that will mean liberation and at least the hope of a better future, Ichi writes in her journal a farewell to her possessions, the ants in the garden and creatures in the pond. It's this childlike innocence that proves truly heartbreaking, and Murata sensitively renders it for the reader. Modern life and reform quickly, inevitably enters the narrative by the end of "A Woman of Pleasure." The Salvation Army enters the picture and offers an alternative for the brothel employees that can bring them away from the life of a servitude in which they have no control over their earnings.

At the very end, Ichi is free from the shackles of Shinonome. She dreams of life swimming with seven-tailed sea turtles from Watatsumi Palace, back with her female-centered family of fisherwomen, making their living getting fish and crabs from the depths of the ocean. It's a pleasant and warm way to end a novel that's equal parts harrowing, historic, feminist, and dreamlike.



Our community
ties run deep.

We're proud
to support
AACA Boston.

We believe in supporting our community in a meaningful way by giving back to those around us.

Find out more at cambridgesavings.com

Always you.



波士顿重建局 (“BRA”)
以波士顿规划与发展局 (“BPDA”) 名义经营

招标邀请函
中国贸易中心自行车室及储藏室 (China Trade Center Bike Room and Storage)

Corey Harris; 617-918-6229; Corey.Harris@boston.gov

波士顿重建局 (“BRA”) 以波士顿规划与发展局 (“BPDA”) 名义经营, 由其首席采购官很高兴发布本次名为“中国贸易中心自行车室及储藏室”(“招标”) 的招标邀请函。本招标是根据《马萨诸塞州普通法》第149章和第30章第39F、39K至39P条, 以及第30-39m章第29条和第44A至44J条的规定发布, 可能会有修订。本项目的招标文件, 包括所有要求, 将于2025年1月13日早上9:00起免费以数字打印格式在BPDA采购门户网站提供下载, 网址为:

www.bostonplans.org/work-with-us/procurement. 所有对本次招标的回应须于2025年2月13日中午12:00之前提交至以下地址: Teresa Polhemus, Secretary, Economic Development and Industrial Corporation c/o Real Estate Administration, One City Hall Square, Room 900A/Reception, Boston MA 02210. Teresa Polhemus, Chief Procurement Officer

波士顿重建局 (“BRA”)
以波士顿规划与发展局 (“BPDA”) 名义经营
招标公告

中国贸易中心商业物业管理服务 (Commercial Property Management of the China Trade Center)

Lauren Firnstein; 617-918-4328; Lauren.M.Firnstein@boston.gov

波士顿重建局 (“BRA”) 以波士顿规划与发展局 (“BPDA”) 名义经营, 通过其首席采购官发布了名为“中国贸易中心商业物业管理服务”(“RFP”) 的招标公告。本次招标依据《马萨诸塞州总法律》第30B章 (及其修订版) 发布。本项目的招标文件将于2025年1月13日上午9:00起通过BPDA采购门户网站以数字打印形式免费提供, 供有意投标人下载, 网址为: www.bostonplans.org/work-with-us/procurement. 所有对此RFP的响应文件必须于2025年2月19日中午12:00前提交至以下地址: Teresa Polhemus, Secretary, Economic Development and Industrial Corporation c/o Real Estate Administration, One City Hall Square, Room 900A/Reception, Boston MA 02210. Teresa Polhemus, Chief Procurement Officer

JMC & Co. Welcomes You to Visit Your New Apartment Home

Table listing apartment locations across Massachusetts: BOSTON (Allston, Dorchester, Roslindale, Jamaica Plain, South Boston), NORTH SHORE (Andover, Saugus, Billerica, Lynnfield, Woburn, Lowell, Amesbury, Chelsea), SOUTH SHORE (Weymouth, Taunton, Hanover, Plymouth, The Commons at SouthField, School Street Apts, Fall River, Hingham, Stoughton, Canton, Mansfield, Scituate), METRO WEST (Framingham, Holliston, Ashland, Pelham Apartments, Cutler Heights, Ashland Woods), CENTRAL MASS (Worcester, Webster, Canterbury Towers, Sitkowski School).

New Hampshire Rhode Island
Nashua W. Warwick
Amherst Park Westcott Terrace
(603)882-0331 (401)828-1490
525 Amherst Street 319 Providence Street
www.jmcandco.com
To place a call using Mass Relay, dial 711

Affordable Housing Lottery
Alexan Waltham
79 Pond Street, Waltham, MA

YOU CAN COMPLETE AND SUBMIT A LOTTERY APPLICATION ONLINE HERE:



https://form.jotform.com/SEBHousing/AlexanWaltham

Affordable Rent Amounts

60% AMI Units: Six 1BRs \$1,741, Four 2BRs \$2,080, Four 3BRs @ \$2,395

80% AMI Units: Two Studios \$2,200, Twenty-Four 1BRs \$2,347, Eleven 2BRs \$2,808, Two 3BRs \$3,235
Tenants will pay for electricity, which is also used for heat, cooking, and hot water. Water, sewer, and a parking space are included in rent. Pets are permitted, subject to restrictions. Rents for future years are subject to change.

Alexan Waltham is a brand-new rental development located in Waltham. The property will contain 210 total apartments with 53 affordable units that will be rented to households with incomes at or below either 60% or 80% of the area median income through this application process. 14 of the affordable units will be available to households with incomes at or below 60% of the area median income, while the remaining 39 units will be rented to households with incomes at or below 80% of the area median income. Community amenities include a large clubhouse with a resort-style pool and sun deck, a modern fitness center, bike storage, dog park, and pet washing stations. The project will offer residents either surface or covered parking and is a half mile from the Waltham Commuter Rail Station and adjacent to Wayside Walk/Bike Trail. Units are expected to be ready for occupancy in March 2025.

Maximum Household Income Limits - 60% AMI Units

\$68,520 (1 person), \$78,360 (2 people), \$88,140 (3 people)
\$97,920 (4 people), \$105,780 (5 people), \$113,640 (6 people)

Maximum Household Income Limits - 80% AMI Units

\$91,200 (1 person), \$104,200 (2 people), \$117,250 (3 people)
\$130,250 (4 people), \$140,700 (5 people) \$151,100 (6 people)

Public Info Session: January 16, 2025 at 6:00 pm via Zoom. Go to zoom.com/join or call (646) 558-8656 and enter Meeting ID: 818 9317 7595, Passcode: 088159

Application Deadline: February 17, 2025 at 2:00 pm. Completed applications are due by this date.

Lottery: March 4, 2025 at 6:00 pm via Zoom. Go to zoom.com/join or call (646) 558-8656 and enter Meeting ID: 857 2736 5609, Passcode: 276410

Attendance is not required at Info or Lottery sessions. To view the recorded sessions at a later date, please search for Alexan Waltham on the SEB Housing YouTube channel.

For Lottery Information, Applications, or for reasonable accommodations for persons with disabilities, go to www.sebhousing.com or call (617) 782-6900x1 to leave a message or postal mail SEB Housing, 257 Hillside Ave, Needham MA 02494. For TTY Services dial 711. Free translation available. Traducción gratuita disponible.



YOU CAN COMPLETE AND SUBMIT A LOTTERY APPLICATION ONLINE HERE:
https://form.jotform.com/SEBHousing/AlexanWaltham

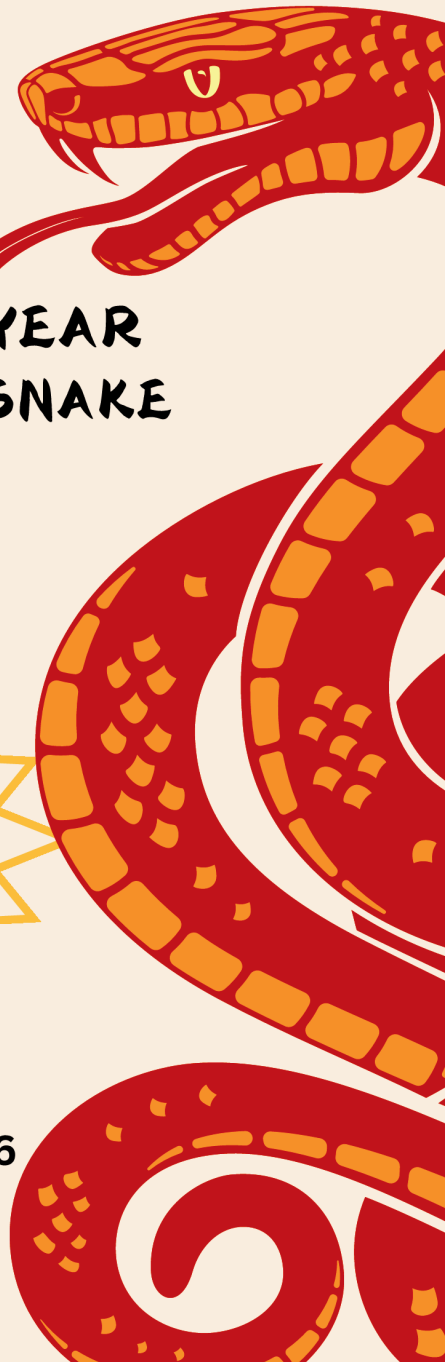


ATTENTION
SAMPAN
ADVERTISERS
LUNAR NEW YEAR
YEAR OF THE SNAKE
2025

Special Issue
January 24th

SUBMIT AD ORDERS
BEFORE 5 PM ON
JANUARY 17, 2025

Contact
ads@sampan.org
617-426-9492 Ext. 206



Job Corner

MIT Alumni Association

Position: Database Programmer Analyst, FT, Hybrid

Bachelor's degree, preferably in Computer Science, Information Technology, Math, or a similar discipline. a minimum of five years of programming experience; experience with Oracle or other DBMS; proficiency with declarative, procedural, or object-oriented programming languages (e.g., SQL, PL/SQL); experience with Crystal Reports, Cognos, and enterprise reporting software; fluency with Microsoft Office software; ability to build rapport and communicate effectively with non-technical users, understand the business and culture, and translate business requirements into solutions to meet immediate needs; ability to advise on data-driven decision-making. To apply: https://careers.peopleclick.com/careerscp/client_mit/external/job-Details/jobDetail.

Position: Assistant Director, Alumni Class Connections, FT, Hybrid

Bachelor's degree; minimum 2 years of relevant experience, preferably in alumni relations or volunteer leadership development in a non-profit setting; able to recruit, motivate, train, and manage volunteers; data analysis, marketing, and/or public relations skills. To apply: https://careers.peopleclick.com/careerscp/client_mit/external/job-Details/jobDetail.

Position: Development Assistant I, FT, Hybrid

High school diploma or equivalent; a minimum of three years of administrative or related experience; advanced scheduling and calendar management skills, and project management abilities; works well independently and collaboratively; demonstrates initiative in a high-energy environment; excellent customer service, meticulous attention to detail, resourcefulness, reliability and flexible approach to the working environment. To apply: https://careers.peopleclick.com/careerscp/client_mit/external/job-Details/jobDetail.

City of Brockton

Position: GRANT WRITER, FT

Bachelor's degree in English, accounting, finance, public administration, or business administration preferred or a related field and 2-3 years of grant writing experience or any equivalent combination of education, training, and experience which provides the required knowledge, skills and abilities to perform the essential functions of the job. To apply: <https://brockton.interview-exchange.com/candapply.jsp?JOBID=183278#pageTop>. Salary: \$79,172 - \$86,513 per hour

Position: Assistant City Auditor - School Department FT

Bachelor's degree in Accounting, Finance, or a related field. Strong understanding of UMAS, MGL, and DESE financial regulations. Experience working with financial accounting systems, particularly MUNIS.

Ability to manage multiple projects and work with various departments.

To apply: <https://brockton.interview-exchange.com/candapply.jsp?JOBID=183278#pageTop>. Salary: \$106,917-\$116,831

Boston Medical Center, MA

Position: Data Analyst, FT

Bachelor's Degree Required Minimum 4 years of experience in a position focused on delivering numerical data to a wide variety of customers. master's degree (or equivalent experience) in a relevant discipline (Preferred). Apply at www.jobs.bmc.org Contact: Caroline Cafer, 617-414-7066, caroline.cafer@bmc.org

Position: Materials Aide (24 Hours, Days), Brockton

A high school diploma required 2 years of experience with computerized inventory systems An understanding of how perpetual inventories work. Excellent customer service skills. Apply at www.jobs.bmc.org Contact: Caroline Cafer, 617-414-7066, caroline.cafer@bmc.org

Position: Director, Health Information Management, FT

An associate degree in Health Information Management required Certification as a Registered Health Information Administrator (RHIA) or Registered Health Information Technician (RHIT) is required. Seven to ten years of progressively responsible experience in a Health Information Management Department is required, with experience in a Level 1 Trauma, teaching organization preferred. Five years of previous managerial experience is required. Apply at www.jobs.bmc.org Contact: Caroline Cafer, 617-414-7066, caroline.cafer@bmc.org

Position: Client Service Analyst-Field Services, FT

Bachelor's degree preferred, in computer science or equivalent field. May substitute an equivalent combination of education and experience. Certification in A+ is strongly preferred. ITIL Foundations certification is strongly preferred One to three years of experience in IT support, with technical proficiency in a broad range of software and hardware. Healthcare experience is a plus. Apply at www.jobs.bmc.org Contact: Caroline Cafer, 617-414-7066, caroline.cafer@bmc.org

Position: Dietary Aide, Food and Nutritional Services (40Hrs Rotating D/E/N)

Work requires demonstrated competence to effectively speak, read, and write English. Ability to follow oral and written instructions. Apply at www.jobs.bmc.org Contact: Caroline Cafer, 617-414-7066, caroline.cafer@bmc.org

Position: General Cleaner - 40 Hrs,

Overnights, 11:00 PM -7:30 AM, and Rotating Weekends

Work requires the ability to read, and follow oral and written instructions in English at a level acquired through the completion of elementary school. Ability to learn and perform basic house-keeping practices and understand the policies and procedures of the hospital. HS Diploma or completion of GED preferred Apply at www.jobs.bmc.org Contact: Caroline Cafer, 617-414-7066, caroline.cafer@bmc.org

Commonwealth of Massachusetts

Position: Social Worker I, FT, Boston

Applicants must have a Bachelor's degree or higher in social work, psychology, sociology, counseling, counseling education, or criminal justice or a relevant human services degree and a current and valid license as a Licensed Social Work Associate, Licensed Social Worker, Licensed Certified Social Worker or Licensed Independent Clinical Social Worker issued by the Massachusetts Board of Registration. Salary: 64,487.80 - 88,078.90 Yearly Apply: <https://massanf.taleo.net/career-section/>

Position: Residential Supervisor II, FT, Danvers

At least four years of full-time, or equivalent part-time, professional experience in counseling, guidance, teaching, or therapeutic services for individuals with developmental disabilities, of which at least two years must have been in a supervisory capacity. Salary: 69,079.14 - 94,349.58 Yearly Apply at: <https://massanf.taleo.net/career-section/>

Position: Program Manager VIII, FT Brockton

Applicants must have at least six (6) years of full-time or, equivalent part-time, professional, administrative, supervisory, or managerial experience in business administration, business management, public administration, public management, clinical administration, or clinical management of which at least two (2) years must have been in a supervisory or managerial capacity. Salary: 104,479.32 - 161,458.43 Yearly Apply at: <https://massanf.taleo.net/career-section/>

Position: Nursing Instructor FT, Boston

Applicants must have at least three years of full-time, or equivalent part-time, experience as a registered nurse in a recognized hospital, clinic, or medical facility, and of which at least one year must have been in a supervisory, administrative, or managerial capacity or as an instructor in nursing. Salary: : 102,746.80 - 171,449.46 Yearly Apply at: <https://massanf.taleo.net/career-section>

Position: Medical Services Clerk, FT Boston

Applicants must have at least three years of full-time, or equivalent part-time, experience in office work and meet other

requirements that can be found on the website.

Salary: 48,776.00 - 64,681.50 Yearly Apply at: <https://massanf.taleo.net/careersection>

Position: Human Service Assistant FT, Malden

No minimum requirement Salary: 55,188.12 - 75,200.84 Yearly Apply at: <https://massanf.taleo.net/careersection>

Boston Public School

Position: Teacher - English as a Second Language, FT

Hold a Bachelor's degree. Hold a valid Massachusetts Teaching License in ESL at the appropriate grade level. Complete state and federal guidelines to be fully licensed and "Highly Qualified." Ability to meet the Standards of Effective Teaching established by the Boston Public Schools as outlined above. Website: <https://www.bostonpublicschools.org/> Contact Info: Recruitment@BostonPublicSchoosl.org

Position: Financial Analyst, FT Bachelor's Degree

1 - 3 years experience in a relevant field Strong oral and written communication skills, particularly in translating financial information into easy-to-interpret, actionable reports, presentations, and findings Excellent analytical ability including formal training in statistics or econometrics. Demonstrated ability to advise and negotiate comfortably with individuals at all levels Ability to prioritize competing demands Experience working with financial systems Salary: \$108,859.00 Website: <https://www.bostonpublicschools.org/> Contact Info: Recruitment@BostonPublicSchoosl.org

Position: Attorney, Labor Relations FT

Law Degree, Juris Doctor from an accredited law school

Admission to Massachusetts Bar Extensive knowledge regarding employee and labor relations protocols, M.G.L. 150E, and state and federal employment laws Proficient project management skills in a multiple location/unit environment. Ability to handle confidential and sensitive matters. Strong computer skills in Microsoft Word, Excel, and PowerPoint. Salary: \$123,604.00 Website: <https://www.bostonpublicschools.org/> Contact Info: Recruitment@BostonPublicSchoosl.org

Position: Part-time Cafeteria Attendant. 4 hours a day

High school diploma or GED required ServSafe Food Handlers Certificate Salary: \$16.5 Website: <https://www.bostonpublicschools.org/>

Report Sheds Light on Gender, Racial Disparities in Earning STEM, Healthcare Associate Degrees

Continued From Page 4
many students, it takes more than one year, and then when you finally are prepared, there's often a waiting list (for the practicums)."

The time it took to complete these programs was often longer than for STEM programs, the report found, meaning that the extended investment in time meant students were at

greater risk of failing to complete the programs.

Immigrant families can have higher burdens. While this was not specifically part of the report, Murnane told the Sampan that areas with high populations of new immigrants can face more challenges, especially when the population is poorer and

has lower English language skills.

"Another complication is that in places such as Lynn – they have experienced a vast number of immigrants coming into the schools. Forty percent of the students entering the two high schools in Lynn are from Central America. That's an astounding number. And consequently, those children have enormous needs. They

need to learn English, many of them are working at night because they need to send money home or pay off (the people that helped) them get here. So the challenges are utterly enormous, and I think the state is trying to deal with them, but it has a long way to go to recognize the how challenging it is for the schools to serve them well."

Lack of Diversity in Clinical Trials

Continued From Page 5
Sampan: What has been done by researchers to lessen this gap? I know that you work at BMC, which historically serves an underrepresented patient population. How have studies at BMC worked to ensure the patient population they draw from is representative of the patient population they serve?

Edwards: This is an area that we have done a lot of work on, and it is really important to us as a safety net hospital that our diverse patients have equitable access to clinical trials... Roughly 70% of our patients self-identify as people of color. We have a regimented process to ensure that every patient with head and neck cancer gets equitable consideration for clinical trials... What that does is that it removes some gatekeeper

biases, such as if the person in the clinic happens to think of the clinical trial while seeing that patient – it formalizes the assessment. Another thing we do is periodically analyze our screening logs. Whenever you are running a clinical trial, you have a screening log where you record every patient that was considered for the clinical trial, whether they ultimately enrolled in it, and if they didn't, why. Periodically analyzing our screening logs allows us to see what our local barriers are to enrollment. For example, we once found that a number of patients could not enroll in clinical trials because they did not have access to translated clinical trial documents in their language... That gives us a way to advocate for our patients and gives our sponsors a tangible thing they can do.

Asian Community Fund Offers Financial Support for Grassroots Organizations

Continued From Page 5
Empowerment Council, AAPI Arts and Culture Collaborative, and Mental Health Collaborative, the fund is building bridges where once there were only silos, say the organizers.


These programs support grassroots organizations that are often run by passionate volunteers dedicating their personal time to community work. The fund has become a lifeline for small, community-driven groups that might otherwise struggle to secure funding and recognition, ACF leaders say.

For Kim, the work carries a deeply personal significance.

Raised in an immigrant family with parents and grandparents who owned a small business, she intimately understands the spirit of community service that drives many Asian Americans, she says.

"In the Asian community, we have a culture of giving back," she explains, "not only helping my own family, but thinking about how we support our neighbors and community members."

The Asian Community Fund says it is not just providing resources for the rapidly growing Asian American population in the region—it's building a more inclusive future.


 City of Boston Planning Department

VIRTUAL PUBLIC MEETING

JAN 13
6:00 PM - 7:30 PM

NEIGHBORHOOD HOUSING

Register: bit.ly/neighborhood-housing-public-meeting
Toll Free: (833) 568 - 8864
Meeting ID: 160 671 3437



DESCRIPTION:
The Boston Planning Department will host a virtual public meeting on **Monday, January 13, 2025, from 6:00-7:30 pm** to present the Neighborhood Housing zoning initiative. We will share high-level principles and expected zoning updates designed to simplify common renovations and additions, make rules easier to follow, and ensure they align with neighborhood character and Boston's future goals.

Interpretation will be provided in Spanish, Cantonese, Mandarin, Vietnamese, Haitian Creole, and Cape Verdean Creole. Additional interpreting services and document translation services are available upon request at no cost to you. Please request interpreting services no later than 5 days before the meeting date.

Mail to: **Will Cohen**
Planning Department
One City Hall Square, 9th Floor
Boston, MA 02201
Phone: 617.918.4450
Email: will.cohen@boston.gov


Website: bostonplans.org/neighborhood-housing

BostonPlans.org | @BostonPlans | Teresa Polhemus, Executive Director/Secretary

Affordable Housing Lottery

Alexan Peabody
128 Newbury Street, Peabody, MA

YOU CAN COMPLETE AND SUBMIT A LOTTERY APPLICATION ONLINE HERE:



<https://form.jotform.com/SEBHousing/AlexanPeabody>

Monthly Rent Amounts
Two Studios - \$2,132; Fifteen 1 Bedrooms - \$2,247
Twenty-Three 2 Bedrooms - \$2,674; Five 3 Bedrooms - \$3,068

**Rents subject to change in future years. Tenants will pay for electric cooking, heat, hot water, electricity, water, and sewer. One parking space is included for residents. Pets are permitted, subject to restrictions.*

Alexan Peabody is a brand new 180-unit apartment community located in Peabody. Forty-five (45) affordable units will be made available through this process to households earning no more than 80% of the Area Median Income. The affordable apartments are located throughout the building and provide finishes identical to the market rate units. Amenities include an expansive exterior courtyard with a resort-style pool and sun deck, clubhouse with a game room and work lounge, a fitness/wellness center, bike storage, and a dog park with pet wash stations. The community is conveniently located near both Routes 1 and 95, providing easy access to many local shops and restaurants.

Maximum Household Income Limits
\$91,200 (1 person), \$104,200 (2 people), \$117,250 (3 people)
\$130,250 (4 people), \$140,700 (5 people) \$151,100 (6 people)


Public Info Session: January 21, 2025 at 6:00 pm via Zoom
Go to zoom.com/join or call (646) 558-8656 and enter Meeting ID: 818 9317 7595. Passcode: 088159

Application Deadline: February 19, 2025 at 2:00 pm
Applications may be completed online, emailed to info@sebhousing.com, or mailed to SEB Housing, Re: Alexan Peabody, 257 Hillside Ave, Needham, MA 02494

Lottery: March 11, 2025 at 6:00pm via Zoom
Go to zoom.com/join or call (646) 558-8656 and enter Meeting ID: 857 2736 5609, Passcode: 276410
Attendance is not required at Info or Lottery sessions. To view the recorded sessions at a later date, please search for Alexan Peabody on the SEB Housing YouTube channel.

For Lottery Information and Applications, or for reasonable accommodations for persons with disabilities, go to www.sebhousing.com or call (617) 782-6900x1 and leave a message or postal mail SEB Housing, 257 Hillside Ave, Needham MA 02494. For TTY Services dial 711. Free translation available.
Traducción gratuita disponible. Tradução livre disponível. 费翻译

YOU CAN COMPLETE AND SUBMIT A LOTTERY APPLICATION ONLINE HERE:
<https://form.jotform.com/SEBHousing/AlexanPeabody>



Events Calendar

R&B Performance with LaQuandra Seymore at the Boston Public Market

Date: Friday, January 3
Time: 5 - 6:30 pm
Address: Boston Public Market, 100 Hanover Street Boston, MA 02108
Event Link: <https://www.eventbrite.com/e/rb-performance-with-laquandra-seymore-at-the-boston-public-market>
Enjoy a live R&B performance with LaQuandra Seymore
Price: Free admission, RSVP

Winter Wonderland Boston

Date: January, 3, 4 & 5
Time: 5 pm
Address: 110 Causeway St 110 Causeway Street Boston, MA 02114
Experience the magic of Winter Wonderland Boston: dazzling lights, festive rides, ice skating, and holiday treats for the whole family!
Event Link: <https://www.eventbrite.com/e/winter-wonderland-boston-tickets-1119167713759?aff=>
Price: Free admission, RSVP

Science and Democracy

Date: Thursday, January 9
Time: 7:00 pm
Address: Museum of Science, 1 Science Pk, Boston, MA 02114
Event Link: https://www.mos.org/events/science-and-democracy?et rid=1920138385&s_
Join the Museum of Science for an evening of community and dialogue on democracy and science.
Price: Free with registration

A Concert for the New Year @ Twelfth Baptist Church

Date: Sunday, January 5, 2025 · 3 - 4:30 pm EST
Time: 3 - 4:30 pm
Address: Twelfth Baptist Church, 160 Warren Street Boston, MA 02119
Event Link: <https://www.eventbrite.com/e/a-concert-for-the-new-year-twelfth-baptist-church-tickets>
Welcome the New Year with this FREE concert featuring David Coleman, Bethlehem Kelley, Maxwell Fairman, and the Boston Landmarks Orchestra!
Price: Free admission

Stand-Up Comedy at The Bell in Hand! - Free Show!

Date: Tuesday, January
Time: 7 - 9 pm
Address: **The Bell In Hand Tavern**, 45-55 Union Street Boston, MA 02108
Event Link: <https://www.eventbrite.com/e/stand-up-comedy-at-the-bell-in-hand-free-show-tickets>
Come laugh with the funniest pro comics in Boston at this free show
Price: Free admission, rsvp

Comedy Night at Bleacher Bar: Free Comedy Show!

Date: Every Tuesday
Time: 8 - 10 pm
Address: Spontaneous Celebrations, 45 Danforth Street Boston, MA
Event Link: <https://www.eventbrite.com/e/comedy-night-at-bleacher-bar-free-comedy-show-tickets->

Enjoy an evening of comedy, delicious food, and drinks as some of Boston's best comedians take over Bleacher Bar at Fenway!
Price: Free, RSVP

Slam Adams: Boston Poetry Slam at the Sam Adams Boston Brewery

Date: Monday, January 6, 2025 · 6 - 8 pm EST
Time: · 6 - 8 pm
Address: Samuel Adams Boston Brewery, 30 Germania St Boston, MA 02130
Event Link: <https://www.eventbrite.com/e/slam-adams-boston-poetry-slam-at-the-sam-adams-boston-brewery>
Experience the electrifying Slam Adams, Boston's hottest poetry slam, fueled by the finest brews at the iconic Sam Adams Boston Brewery
Price: free, RSVP

After Work Social at Fete

Date: Thursday, January 9, 2025 ·
Time: 6 - 10 pm
Address: **Fete**, 25 Kingston Street Boston, MA 02111
Event link: <https://www.eventbrite.com/e/after-work-social-at-fete-tickets-1118295244179?>
Unwind after work with drinks and bites at Fete on Thursday, January 9th.
Price: Free

Speech Storytelling Masterclass Boston

Date: Thursday, January 9, 2025 ·
Time: 2 - 3:30 pm
Address: This is an online event, register to get the link
Event Link: <https://www.eventbrite.com/e/speech-storytelling-masterclass-boston-tickets->
Learn how to ignite your audience with captivating stories: Unleash your inner storyteller at the Speech Storytelling Masterclass in Boston.
Price: Free, RSVP

HAAM - Who We Art | Gallery Reception

Date: Friday, January 10, 2025 ·
Time: 4 - 6 pm
Address: Boston City Hall, 1 City Hall Square Boston, MA 02201
Event Link: <https://www.eventbrite.com/e/haam-who-we-art-gallery-reception-tickets-1119868088599?>
Experience a night of art and creativity at Boston City Hall with the Haitian Artists Assembly of Massachusetts at the celebration of their 30th Anniversary.
Price: Free admission, RSVP

Face Painting at the Boston Public Market

Date: January 11 & 12
Time: 10 am - 4 pm
Address:
Event Link: <https://www.eventbrite.com/e/face-painting-at-the-boston-public-market-tickets>
Boston Public Market, 100 Hanover Street Boston, MA 02108
Grab your little ones and get their faces painted with FaceArt face painting for an unforgettable experience of creativity and fun

Price: Free, RSVP

Trivia at Sam Adams Boston Brewery

Date: Thursday, January 9
Time: 6 - 9 pm
Address: Samuel Adams Boston Brewery, 30 Germania St Boston, MA 02130
Event Link: <https://www.eventbrite.com/e/trivia-at-sam-adams-boston-brewery-tickets->
Grab your friends and come down for trivia in the Taproom every Thursday!
Price: free

Tricks are for Kids! Ft. Magician, Peter O'Malley

Date: Every Saturday in January
Time: 10 - 11 am
Address: Boston Public Market, 100 Hanover Street Boston, MA 02108
Event Link: <https://www.eventbrite.com/e/tricks-are-for-kids-ft-magician-peter-omalley-tickets>
Enjoy an hour of magic with professional magician, Peter O'Malley
Price: free, RSVP

Stump Trivia at the Boston Public Market

Date: Every Wednesday
Time: 6 - 8 pm
Address: Boston Public Market, 100 Hanover Street Boston, MA 02108
Event link: <https://www.eventbrite.com/e/stump-trivia-at-the-boston-public-market-tickets>

Join us for a game by Sporcle at the BPM.

Price: Free, RSVP

Comedy Show at Lucky's Lounge Seaport

Date: Every Monday in January
Time: 7:30 - 9 pm
Address: Lucky's Lounge, 355 Congress Street Boston, MA 02210
Event Link: <https://www.eventbrite.com/e/comedy-show-at-luckys-lounge-seaport-tickets->
Join us for a free standup comedy show every Monday at Lucky's Lounge with New England's best comedians
Price: Free, RSVP

Live Music Sundays

Date: Every Sunday
Time: 2 - 5 pm
Address: Samuel Adams Boston Brewery, 30 Germania St Boston, MA 02130
Event Link: <https://www.eventbrite.com/e/live-music-sundays-tickets-505318750987?aff=>
Intro: Get ready to enjoy originals and covers by local Boston musicians.
Price: free admission

Comedy Night at Rosebud Bar & Kitchen

Date: Every Tuesday
Time: 7 pm - 10 pm
Address: Rosebud Indian-American Bar & Kitchen, 381 Summer Street Somerville, MA 02144

Robert F. Kennedy Jr. Nomination and Public Health Skepticism

Continued From Page 2
difficult for him to remake entirely such massive and complex organizations such as the NIH or the FDA. He will likely face institutional and bureaucratic pressures as well as resistance from other leaders within these organizations. But as one of the public faces of American health policy, Kennedy can perhaps wield the influence of "soft power" - he can engage in media campaigns that shift Americans' views on a variety of health issues.

What does Kennedy actually believe? He has stated multiple times that he is not "anti-vaccine" but has nonetheless said that no vaccines are safe and effective and that they may cause autism in young children. He has made confusing and contradictory claims about the polio vaccine, saying that he is "all for the polio vaccine" while at the same time apparently directing his lawyer to ask the FDA to revoke the vaccine's approval. He says he does not want to remove access to any vaccines, but how can one take him at his word? Kennedy has made a number of other claims about food safety, including the benefits of raw milk (despite the potential for raw milk to carry dangerous bacteria) and the dangers of fluoridated water. Given that he could possibly oversee the FDA, Kennedy could direct the agency to change their policies or safety measures regarding pasteur-

ization regulation or regulate more heavily ultraprocessed foods, another of his stump speech topics. But given Kennedy's slippery rhetoric, he may only further reduce trust that Americans have in their government and health agencies.

The data on public trust in government agencies and health officials are not encouraging. According to a study in Health Affairs published in 2023, only around 30% of U.S. adults place a great deal of trust in the FDA. Less than 40% trust the CDC or NIH to the same degree. America's health organizations are dealing with low levels of trust and confidence across the board - but there is a partisan aspect to it. The aforementioned study featured data collected in 2022, about two years into the pandemic. Respondents who admitted lower levels of trust cited feeling that health agencies had become "politically motivated." Republicans surveyed expressed lower levels of trust than Democrats, possibly because Republicans viewed the Biden administration's health officials as mere mouthpieces for the Biden administration. There is little doubt, of course, that Democrats will express far less trust in health agencies once Trump takes office, particularly if RFK Jr. is confirmed. But, then again, in some sense, even if RFK Jr. becomes HHS secretary, that will be the least of our problems.

▶▶ 马丁·路德·

金纪念日 ▶▶▶▶▶

▶ 马萨诸塞州居民免费入场 ▶ 周一 1月20日 ▶ 上午 10 点至下午 5 点



Lois Mailou Jones, *Ubi Girl from Tai Region*, 1972. Acrylic on canvas. The Hayden Collection—Charles Henry Hayden Fund. © Lois Mailou Jones Pierre-Noel Trust.

MFA Boston

▶ mfa.org/mlk

▶ Museum of Fine Arts, Boston

In partnership with

✿ Citizens®